



PASS-SIG

Psychosis & Schizophrenia Spectrum Special Interest Group

TABLE OF CONTENTS

2. AWARDEES

3. EVENTS

4. GOALS MET

5. FUTURE GOALS

6. SMI SPECIALTY

7. MEMBER

ACCOMPLISHMENTS

8. RESOURCES

9. LEADERSHIP

Website: schizpsychosis.org

Twitter: [@ABCTpsychosis](https://twitter.com/ABCTpsychosis)

LinkedIn: [PASS-SIG](https://www.linkedin.com/company/pass-sig)

Facebook: [Schizophrenia@ABCT](https://www.facebook.com/Schizophrenia@ABCT)

PASS-SIG 2020 AWARDEES

THE TRAILBLAZER AWARD

Gary Bond, Ph.D., was the recipient of the 2020 PASS-SIG Trailblazer Award, in celebration of his achievements in research and dissemination and implementation of evidence-based services for people with psychosis and the schizophrenia spectrum. Spanning four decades, his work includes early replications of the assertive community treatment model and the first studies of supported employment. Bond and colleagues pioneered the development and validation of fidelity scales measuring quality of implementa-



tion of evidence-based practices. Fidelity scales that he helped develop are now used in hundreds of programs worldwide, promoting delivery of effective services. As co-investigator on the National Implementing Evidence-Based Practices Project, he helped create five standardized fidelity scales. His recent work has focused on the evaluation, dissemination, implementation, and sustainment of Individual Placement and Support supported employment. Bond delivered a presentation on his work, entitled "Measuring Fidelity to Evidence-Based Practices," at our SIG's annual meeting at the ABCT virtual convention.

SIG POSTER EXPO: STUDENT POSTER AWARD

We are pleased to announce our two awardees Robert Mercado and Elizabeth Nutting who split the winning prize of \$100. We are grateful to all the presenters and Dr. Snyder and Dr. Perivoliotis for judging these exceptional posters!



Robert Mercado presented his poster "Person-first Language, Identify-first Language and Their Effect on People with Serious Mental Illness: A Scoping Study" --University of California San Diego

Elizabeth Nutting presented her poster "An Estimated Prevalence of Cognitive Behavioral Therapy for Psychosis (CBTp) Providers in the U.S. and Canada" University of Washington



PASS-SIG 2020 EVENTS

THE PRECONVENTION FORUM

What is the preconvention forum?

Every year our SIG aims to provide a forum prior to the ABCT convention geared towards the community we are residing in. Our goal is to both provide tools for evidence based-therapy for SMI, as well as to hear from relevant stakeholders including those with lived experience and family members. We do our best to also offer free CE credits for all attendees every year.

A 2020 Virtual Forum!

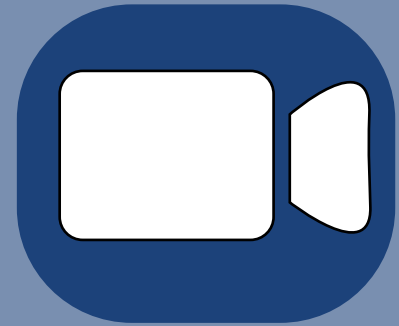
Though COVID-19 prevented us from being present in Philadelphia, we appreciated that the virtual platform opened the door for more attendees (over 60!).

Who were the Speakers?

We thank [Mr. Shawn Anderson](#) founder of [Ur-StoryTellers](#), [Mr. Steven Burkitt](#), [Dr. Yaara Zisman-Ilani](#), [Dr. Nev Jones](#), and [Dr. Shirley Glynn](#).

Who were the leaders and partners?

Thank you to our moderators/coordinators [Dr. Elizabeth Thomas](#), [Dr. Aaron Brinen](#), and [Ms. Ivy Tran](#). We are also appreciative of our sponsors [APA Division 18 Serious Mental Illness/Serious Emotional Disturbance Section](#), [Horizon House Inc.](#), and our planning partners [Gaudenzia Inc.](#), [Pennsylvania Peer Support Coalition](#), [Community Treatment Teams](#), [Evidence Based Practice and Innovation Center](#), and [the Department of Behavioral Health and Intellectual disAbility Services](#).



CAREER PANEL

What Was Our Career Panel?

This year, we invited Clinical Psychologists in SMI with many different career trajectories (e.g. private practice, activism, Veterans Affairs position, early academic, public health) to give insight into their careers and the decisions they made to get there!

Who Attended?

We had over 25 students at different points in their careers (undergraduates, graduate students, post-docs) attend. We are hoping to do more events like this in the future!

Who were the Speakers?

We would like to thank [Dr. Nev Jones](#), [Dr. Maria Santos](#), [Dr. Jerome Yoman](#), [Dr. Jason Vogler](#), and [Dr. Dimitri Perivoliotis](#).

If you have ideas for next year's events, please contact SIG Leadership!

PASS-SIG 2020 GOALS MET

STUDENT OUTREACH

- Successful Career Panel
- Continued support & success of Student Research Award
- Developed list of SMI-related graduate and internship opportunities

- Identified and connected with graduate clinical psychology programs providing Psychosocial Rehabilitation and Recovery training opportunities with SMI

SOCIAL MEDIA

- New Twitter
- Improved Outreach
- Updated Website, including history of SIG



EVENTS

- Preconvention Forum
- Career Panel
- Virtual PASS-SIG Expo
- Annual Meeting with over 35 members!
- Six symposia, three panels, and one workshop at ABCT!
- Two of these symposia sponsored by our SIG!
- Successful Zoom Happy Hour

Don't forget that every year our SIG sponsors two symposia. We will be releasing our due date for abstracts very soon! Our due dates for SIG-Expo posters are typically in early Summer.

**REMINDER: CALL FOR ABSTRACTS
COMING SOON!**

PASS-SIG FUTURE GOALS

CONTINUE TO OFFER CAREER PANELS AND OTHER OPPORTUNITIES TO STUDENTS

- ❑ If you have an idea for a career panel, or would like to be a speaker, please contact Olivia Altamirano. We are always looking for speakers who are willing to contribute their time and wisdom to furthering the careers of our young professionals!

BIPOC/LIVED EXPERIENCE STIPEND/SCHOLARSHIP FOR 2021

- ❑ Our SIG voted this year to approve a scholarship that will provide funding to attend our future conferences for individuals who identify either as “BIPOC” or having “lived experience” of SMI. We currently have \$500 for this year’s scholarship.
- ❑ In order to improve access we hope to cover fees in addition to travel expenses. We are also interested in furthering this goal through a mentorship program.
- ❑ Money contributed overbudget will either be used to support an additional individual or will be secured for the subsequent year’s scholarship.
- ❑ Candidates will not be required to clarify which identity they are applying under.
- ❑ Those interested in contributing to this fund can contact Daisy Lopez and/or utilize our SIG’s paypal account: <http://paypal.me/abctSZsig>.

MENTORSHIP FOR STUDENTS

- ❑ Our SIG has previously supported mentorship through one-on-one discussions with mentors during ABCT conferences and providing career panels
- ❑ However, we are interested in providing more specific mentorship opportunities, especially to underrepresented students and undergraduates.
- ❑ We are still in the development phase and would be interested in ideas, suggestions, and potential mentors.
- ❑ Our goal is to improve access to this field, provide support to students, and create a more cohesive, inclusive network of upcoming, new, and advanced professionals!

DEVELOP PRECONVENTION FORUM FOR ABCT 2021 IN NEW ORLEANS

- ❑ We are looking for Local Coordinators in New Orleans who would be willing to assist us in developing our Preconvention Forum! If you, or one of your contacts may be interested, please contact Dr. Charlie Davidson.



UPDATES ON THE SPECIALTY COUNCIL FOR SMI PSYCHOLOGY

The Specialty Council for SMI Psychology is comprised of four organizations and promotes specialized training and competency development for psychologists who work with individuals with SMI.



RECOGNITION AS A SPECIALTY

SMI Psychology refers to the application of specialized individual, societal, and systems level assessment and intervention methods to assist those who have developed SMI, or who are at risk of developing these illnesses, to recover and attain their full functional capability. With the aim of defining SMI Psychology as a specialty, the Council has been recently granted recognition of SMI Psychology as a specialty at the postdoctoral level by the American Psychological Association (APA) Commission on Accreditation. Moving forward, the Council plans to continue working to establish the process of accrediting postdoctoral programs with major areas of study in SMI and training evaluators to review such programs.

SPECIALIZATION FOR BOARD CERTIFICATION

The Specialty Council for SMI Psychology has also been working towards specialty status from the American Board of Professional Psychology (ABPP). The full application was submitted late 2020 and has been approved to move forward to the Implementation phase by the ABPP Board of Trustees! The next step involves the development of an ABPP Manual for SMI Psychology, which includes the development of criteria that psychologists who wish to apply for board certification in SMI Psychology would need to fulfill. The manual is expected to be submitted to ABPP in December 2021. If approved, recruitment of interested psychologists will begin in Spring 2022. Thank you to everyone who has been involved in this process! Thanks to these efforts, we are close to achieving a milestone in the history of SMI Psychology, and one that will pave the way for progress in this area. You can find more information at psychtrainingsmi.com.

Books

RECOVERY-ORIENTED COGNITIVE THERAPY FOR SERIOUS MENTAL HEALTH CONCERNS

By Aaron T. Beck, Paul Grant, Ellen Inverso, Aaron P. Brinen, and Dimitri Perivoliotis

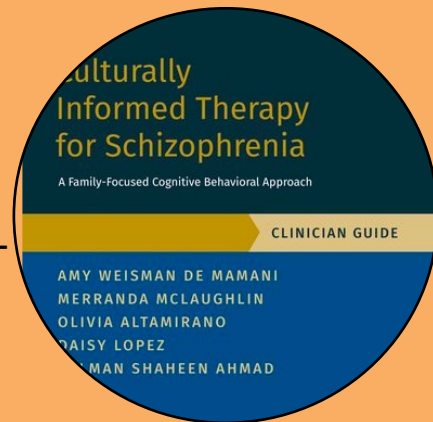
This evidence-based approach empowers people given a serious mental health diagnosis such as schizophrenia to build a better life in their chosen community. CT-R provides innovative strategies to help individuals shift from a “patient” mode to an adaptive mode of living and take positive steps to pursue valued aspirations.



CULTURALLY INFORMED THERAPY FOR SCHIZOPHRENIA

By Amy Weisman de Mamani, Merranda McLaughlin, Olivia Altamirano, Daisy Lopez, and Salman Shaheen Ahmad

CIT-S is a 15-week program that integrates components of family therapy with a cognitive behavioral approach for managing schizophrenia spectrum disorders. The intervention draws upon clients’ cultural beliefs, practices, and traditions to help them conceptualize and manage mental illness.



Paper Highlights

HOW OFTEN DO US-BASED SCHIZOPHRENIA PAPERS PUBLISHED IN HIGH-IMPACT PSYCHIATRIC JOURNALS REPORT ON RACE AND ETHNICITY?: A 20-YEAR UPDATE OF LEWINE AND CAUDLE (1999)

By Nagendra, A., Orleans-Pobee, M., Spahn, R., Monette, M., Sosoo, EE., Pinkham, AE., & Penn, DL.

CLINICAL AND DEMOGRAPHIC CORRELATES OF STIGMA IN FIRST EPISODE PSYCHOSIS: THE IMPACT OF DURATION OF UNTREATED PSYCHOSIS

By Mueser, K.T., DeTore, N.R., Kredlow, M.A., Bourgeois, M.L., Penn, D.L., & Hintz, K.

PSYCHOMETRIC PROPERTIES OF THE OBSERVABLE SOCIAL COGNITION RATING SCALE (OSCARs): SELF-REPORT AND INFORMANT-RATED SOCIAL COGNITIVE ABILITIES IN SCHIZOPHRENIA

By Halverson, T. F., Hajdúk, M., Pinkham, A. E., Harvey, P. D., Jarskog, L. F., Nye, L., & Penn, D. L.

FIRST-PERSON ACCOUNTS OF CHANGE AMONG YOUNG ADULTS ENROLLED IN COORDINATED SPECIALTY CARE FOR FIRST-EPISODE PSYCHOSIS

By Daley, T.C., Jones, N., George, P., & Rosenblatt, A.

RESOURCES FOR STUDENTS

- ❑ [PASS-SIG](#)
- ❑ [Training Resources for Students](#)
- ❑ [List of Training Programs for Prospective Grads & Interns](#)

OTHER SMI-RELATED ORGS

- ❑ [APA Serious Mental Illness Section](#)
- ❑ [Specialty Council for Serious Mental Illness](#)
- ❑ [International Society for](#)

PEER-LED ORGANIZATIONS

- ❑ [Hearing Voices Network](#)
- ❑ [National Alliance on Mental Illness](#)

RESOURCES FOR CLINICIANS

- ❑ [SMI Advisor](#)
- ❑ [RecoverwithCBT](#)
- ❑ [Book: The Schizophrenia Spectrum](#)
- ❑ [Book: Social Skills Training for Schizophrenia](#)
- ❑ [Book: Don't Call Me Nuts : Coping with the Stigma of Mental Illness](#)
- ❑ [Podcast: Dr. Owens on Prodromal Psychosis](#)

ORGS TO FOLLOW ON SOCIAL MEDIA

- ❑ [PASS-SIG \(also see below\)](#)
- ❑ [ABCT](#)
- ❑ [ISPS](#)
- ❑ [Hearing Voices Network](#)

For on-the-go resources, please follow our listserv by emailing Dr. Jen Snyder! If you have more resources you think should be listed for upcoming newsletters please contact Merranda McLaughlin. --PASScual, the Resource Penguin

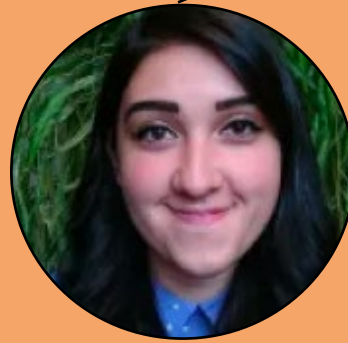


PASS-SIG LEADERSHIP

Thank you to all of our leadership which made this year possible. An additional thank you to Dr. Dimitri Perivoliotis, our VA liason, who is stepping down this year. We thank him for all of his excellent service and are currently looking for a new VA liason to continue his work.



Leader: Charlie Davidson, Ph.D.
charles.a.davidson@gmail.com



Treasurer: Daisy Lopez, M.S.
daisylopez@miami.edu



Student Organizer: Olivia Altamirano, M.S.
olivia.altamirano2@gmail.com



Social Media Organizer: Bryan Stiles, B.A.
stilesb@unc.edu



Website Moderator: Merranda McLaughlin, M.S.
merrandamclaughlin@miami.edu



Student Representative to the Specialty Council in SMI Psychology: Salman Ahmad, M.S.
s.s.ahmad@miami.edu



Faculty Representative to the Specialty Council in SMI Psychology: Alia Warner, Ph.D.
alia.r.warner@uth.tmc.edu



Listserv Moderator: Jen Snyder, Ph.D.
snycock@gmail.com